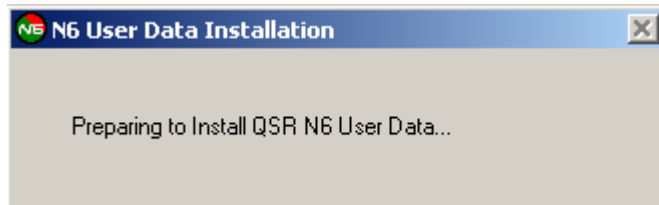


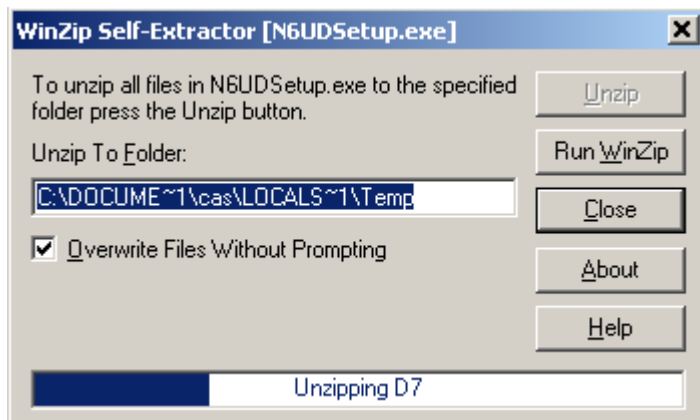
Instructions for Running N6 for the First Time

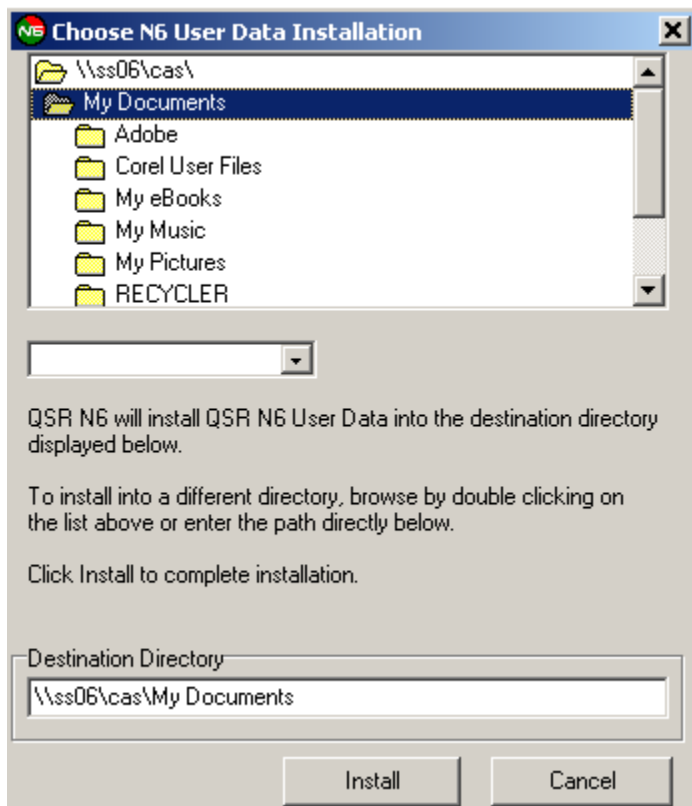
Written Aug 17 2004 Min Zhou
Last Modified Aug 17 2004 Colin Odden

When using N6 for the first time, click the N6 shortcut on the desktop. “N6 user data” will begin the installation and self-extracting process (Figure 1 & 2) and will get to “Choose N6 Data Installation” window (Figure 3)



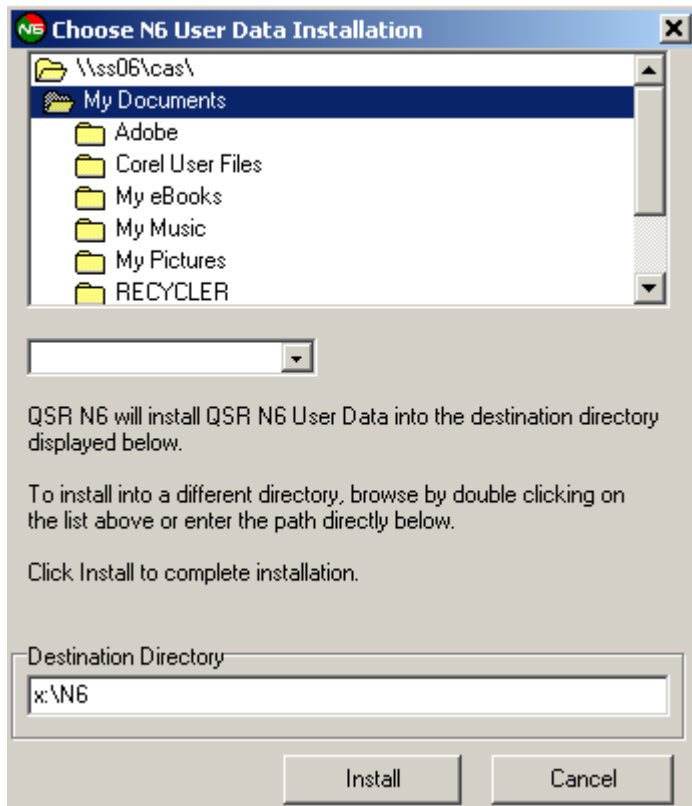
Please note that we used an account called ‘cas’ to document this process. You should expect to see your Sociology username in place of *cas*.





In the “Destination Directory”, delete the default directory*, then type in “x:\N6”, then click “Install”. This will automatically create a new folder called “N6” under your X drive and will have N6 data installed in that folder.

** Note: the default directory is “\\ss06\ini\my documents” (ini is the initial of whom is logging in when running the N6).*



The N6 user window will then appear, ready to be used. Next time when you run N6, it will take you directly to this window without going through the setup process mentioned above.

